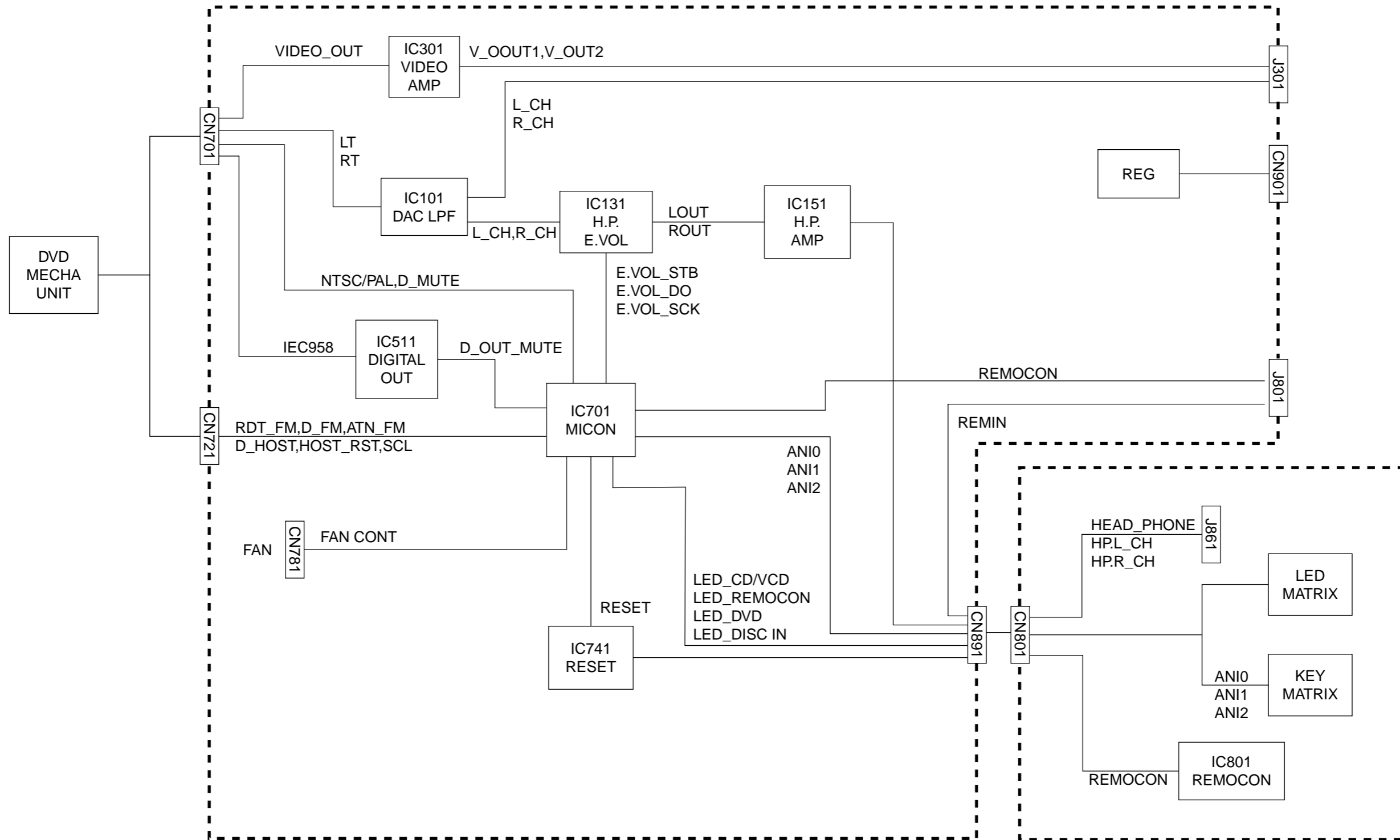
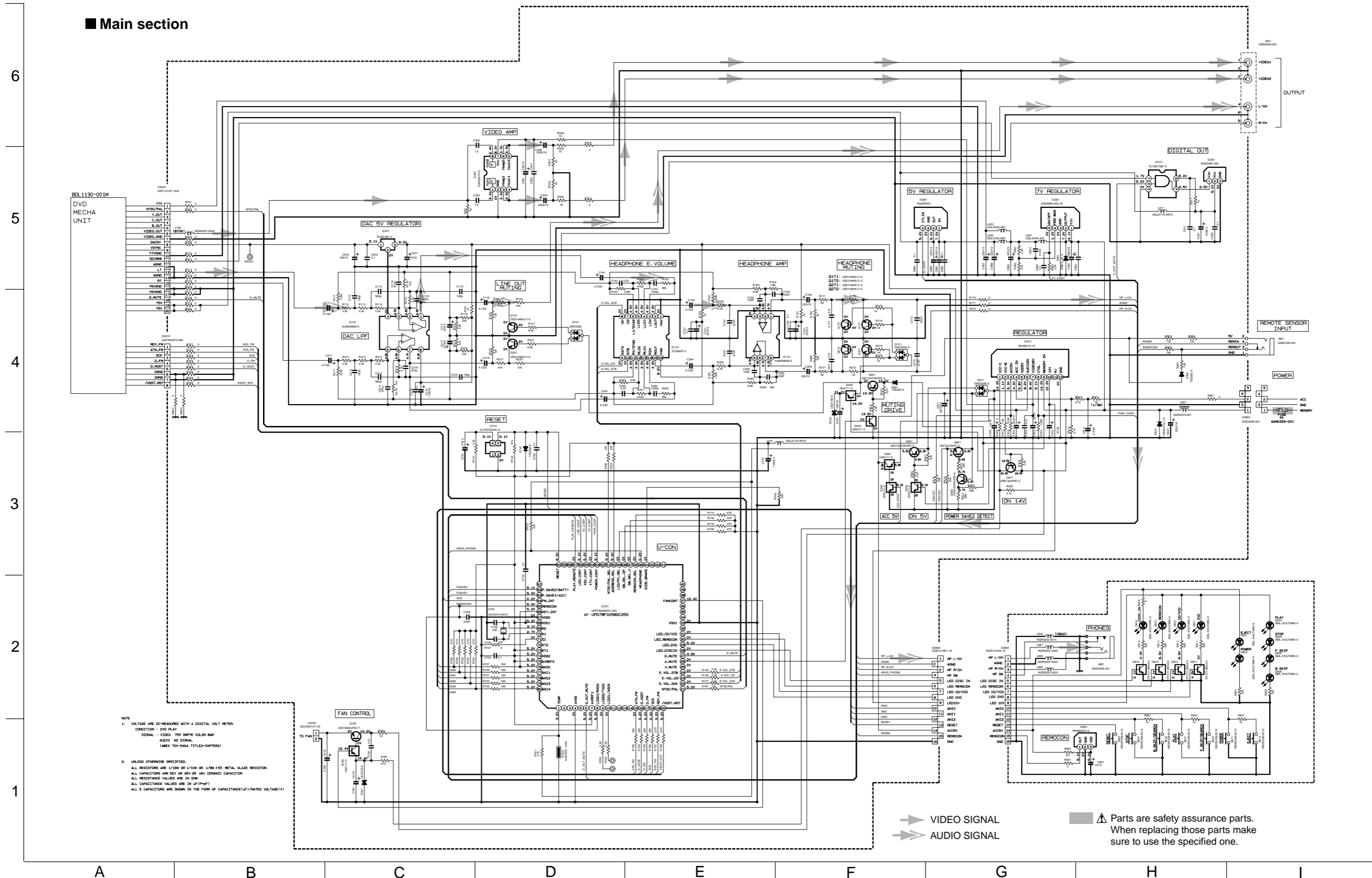


Block diagram



Standard schematic diagrams

Main section



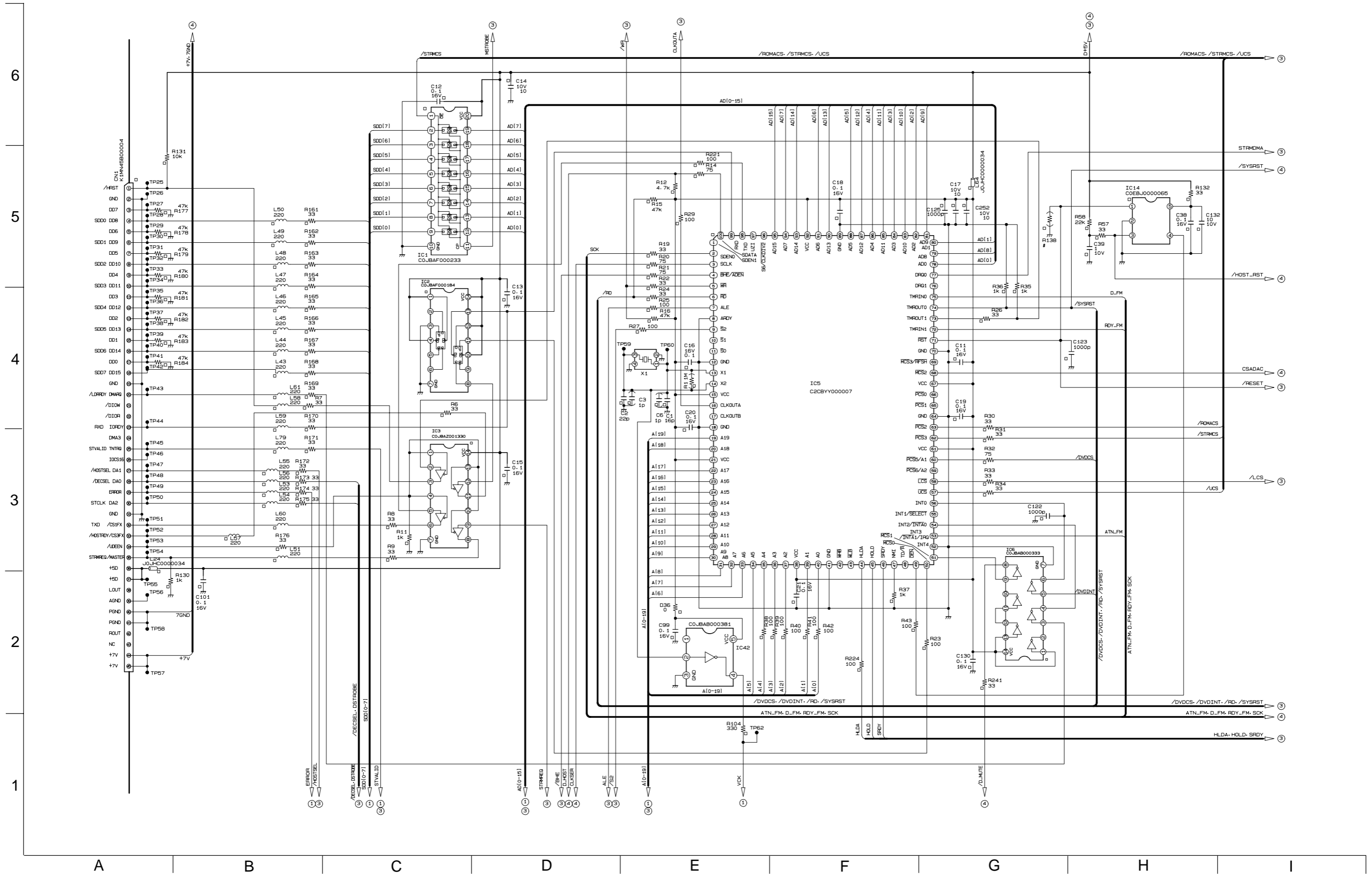
NOTE

- VOLTAGE ARE DC-MEASURED WITH A DIGITAL VOLT METER.
CONDITION : DVD PLAY
SIGNAL : VIDEO 75Ω SMPTE COLOR BAR
AUDIO NO SIGNAL
(AREX TDV-540A TITLES-CHAPTER)
- UNLESS OTHERWISE SPECIFIED:
ALL RESISTORS ARE 1/8W OR 1/10W OR 1/4W 400V METAL GLAZE RESISTOR
ALL CAPACITORS ARE 50V OR 25V OR 16V ORGANIC CAPACITOR
ALL RESISTANCE VALUES ARE IN ΩK
ALL CAPACITANCE VALUES ARE IN μF(PF)
ALL CAPACITORS ARE SHOWN IN THE FORM OF CAPACITANCE/(RATED VOLTAGE)V

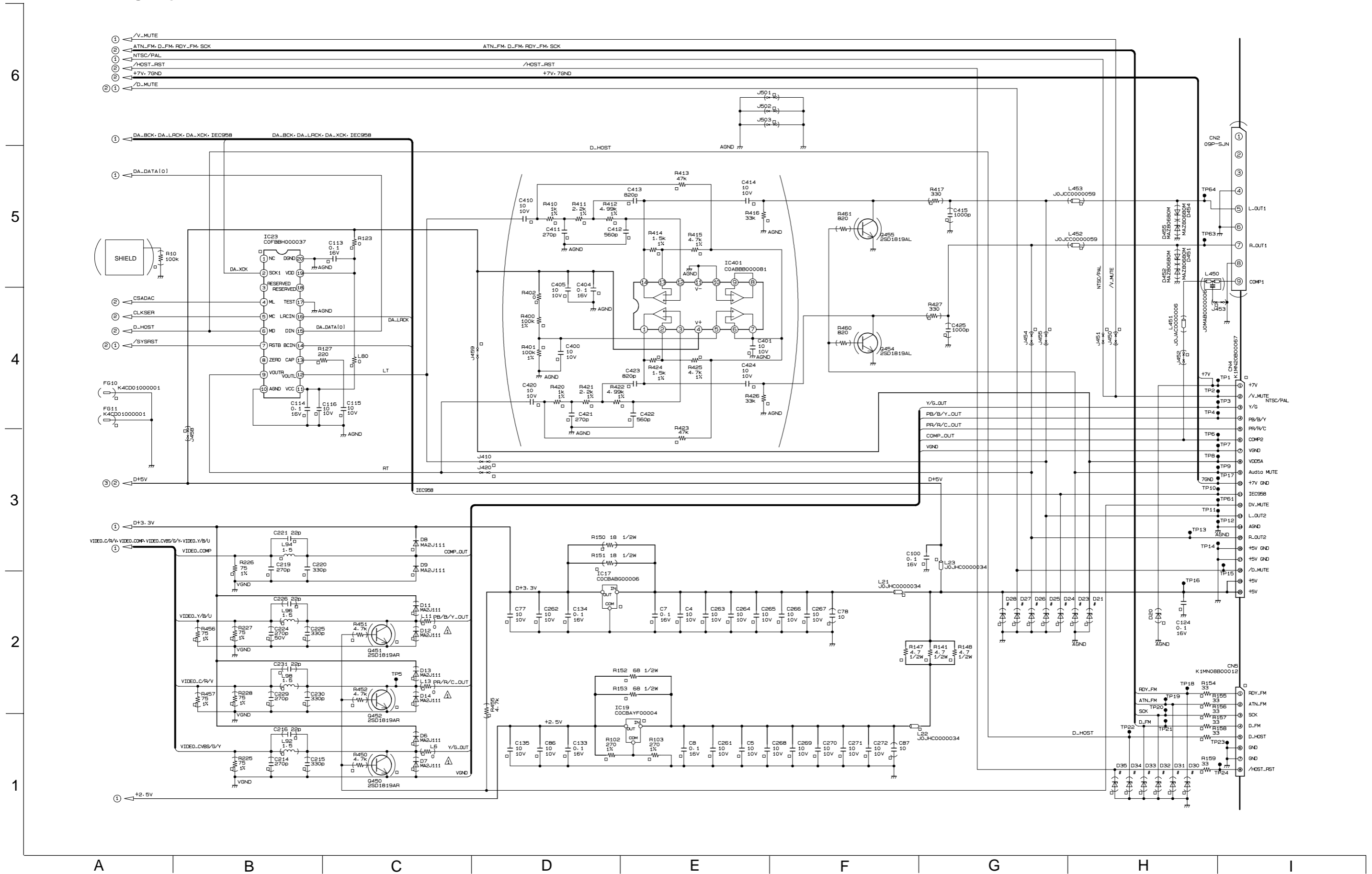
➔ VIDEO SIGNAL
➔➔ AUDIO SIGNAL

⚠ Parts are safety assurance parts.
When replacing those parts make sure to use the specified one.

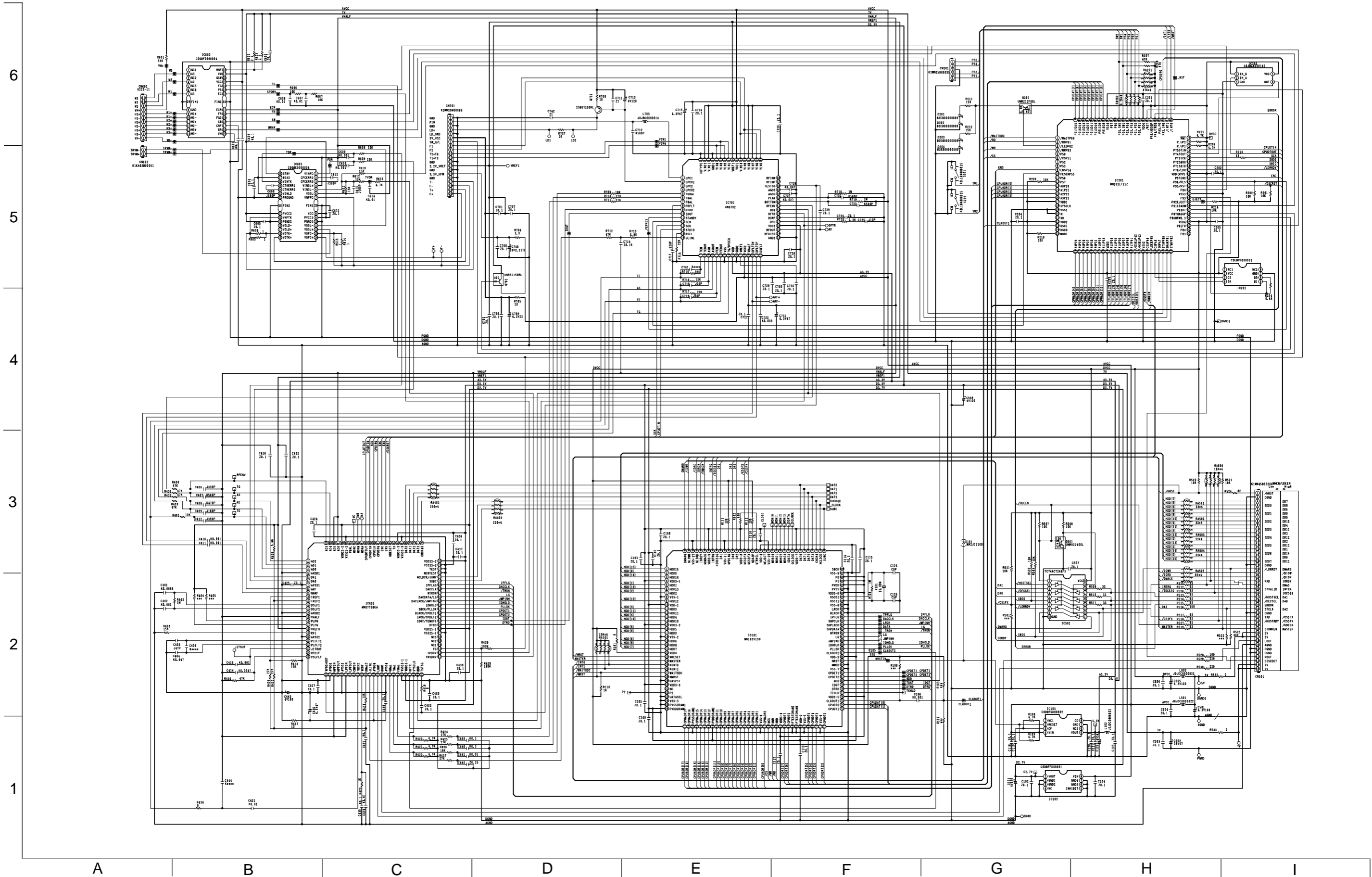
VIDEO encoder section



■ Analog output section



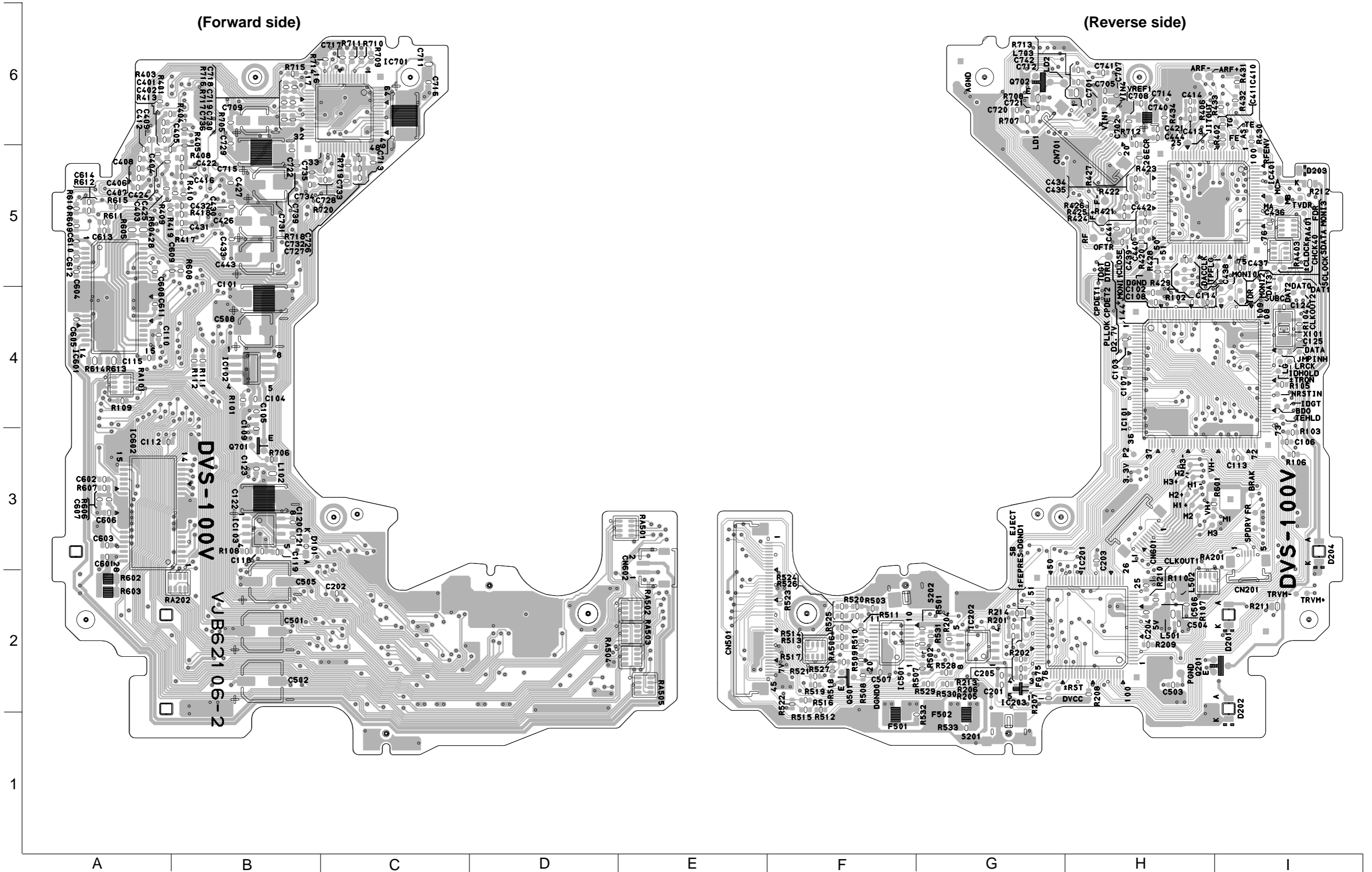
■ DVD servo control section



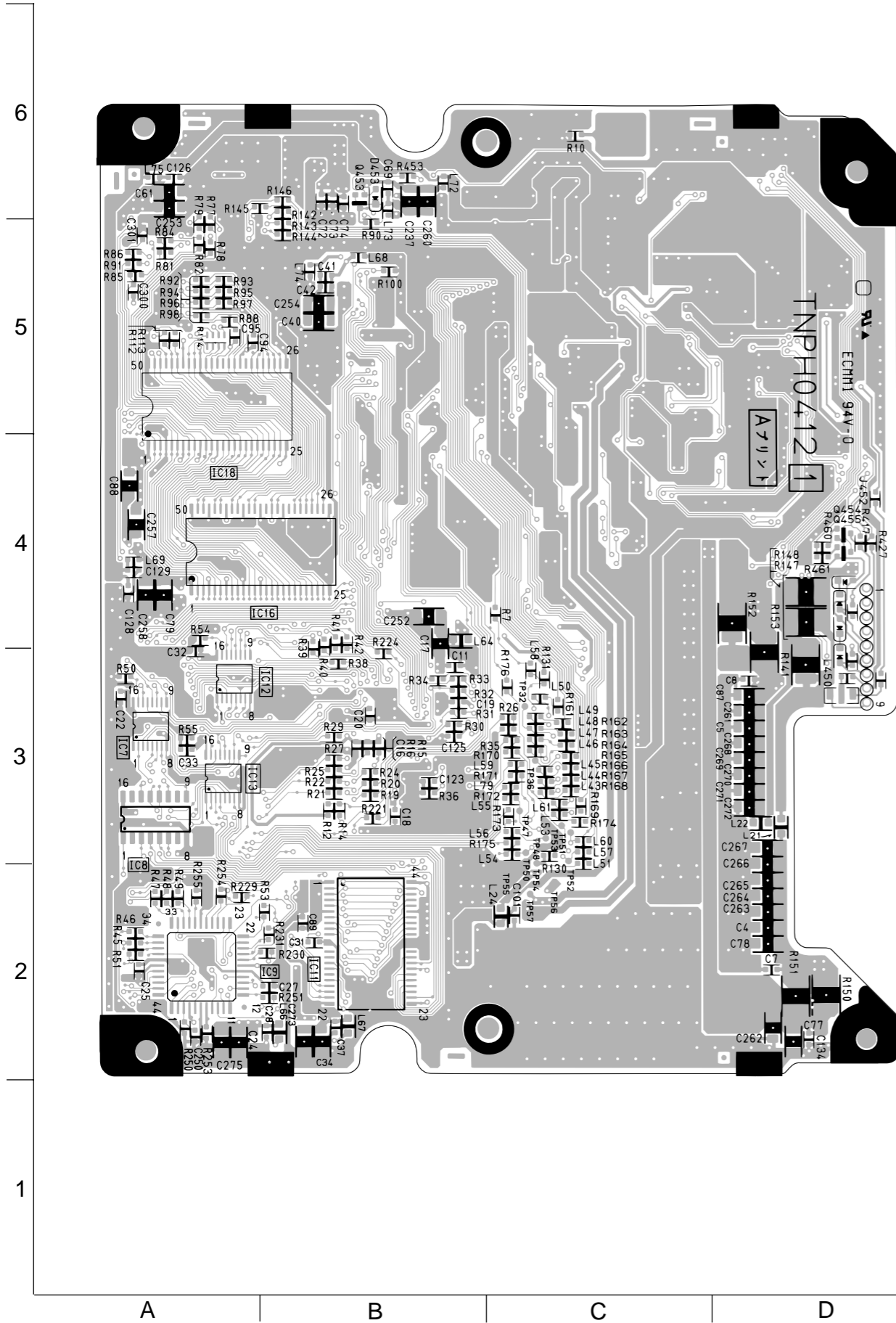
■ Frontend board

(Forward side)

(Reverse side)



■ Backend board (Forward side)



■ Backend board (Reverse side)

